



Kick-Off

English Language Learner ELL Network For ELL Teachers & Support Staff

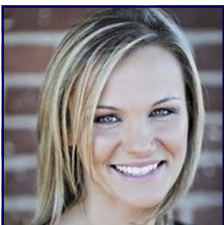
April 27, 2017 ☀ 1:00 PM — 3:00 PM ☀ At Metro ECSU

Are you an EL specialist currently in the classroom looking for innovative ideas, strategies, curricula, and just options to brainstorm and network with other EL specialists? Here's your chance...this session is a prequel to the 2017-18 school year network where you can share your ideas and insights from and to your classroom.

We invite you to join our Spring Kick Off session to introduce and outline the session series of networks for you. Don't miss this session...you'll walk away with new connections and strategies to use in your EL class immediately, and identify themes and must-haves for subsequent sessions!

This Network will:

- * Provide a networking opportunity for all area EL teaching specialists
- * Share, learn, and develop new and innovative EL instructional ideas
- * Go deeper in becoming an advocate from the EL classroom to district level decision makers
- * Analyze and discuss current trends in curriculum, SLIFE, and progress monitoring



Facilitator, Martina Wagner, Ed. D:

Dr. Martina Wagner has a background in serving English Language Learners that has spanned over twenty years in grades pre-K through adult education. Her professional passions and expertise include best practice and programming for ELs, Sheltered Instruction (SIOP[®]), Co-teaching, Special Education Identifications of ELs, WIDA assessments, and English Language Learning assessments and data.

REGISTRATION INFORMATION

FEE: Free for Metro ECSU Members (please register); \$25 Non-Members.

REGISTER ONLINE: <http://metroecsus.myquickreg.com/register/event/>

REGISTRATION DEADLINE: April 27, 2017

CANCELLATION DEADLINE: April 25, 2017

PROGRAM CONTACT: Martina Wagner, 612.638.1509; martina.wagner@metroecsus.org

REGISTRATION CONTACT: Susan Frame, 612.638.1543; susan.frame@metroecsus.org

LOCATION: Metro ECSU (Anderson Center, Bethel University), 2 Pine Tree Dr, Arden Hills, MN 55112

In compliance with the Americans with Disabilities Act, when special accommodations are needed, contact Susan Frame (612-638-1543, susan.frame@metroecsus.org) at least two - three weeks before the event date. Special accommodation cancellation notices are accepted no later than two (2) business days before the event date. Cancellations after the deadline will be billed for special accommodations fees.

